



Mapping new economic opportunities | **REGIONAL — NATIONAL — GLOBAL**

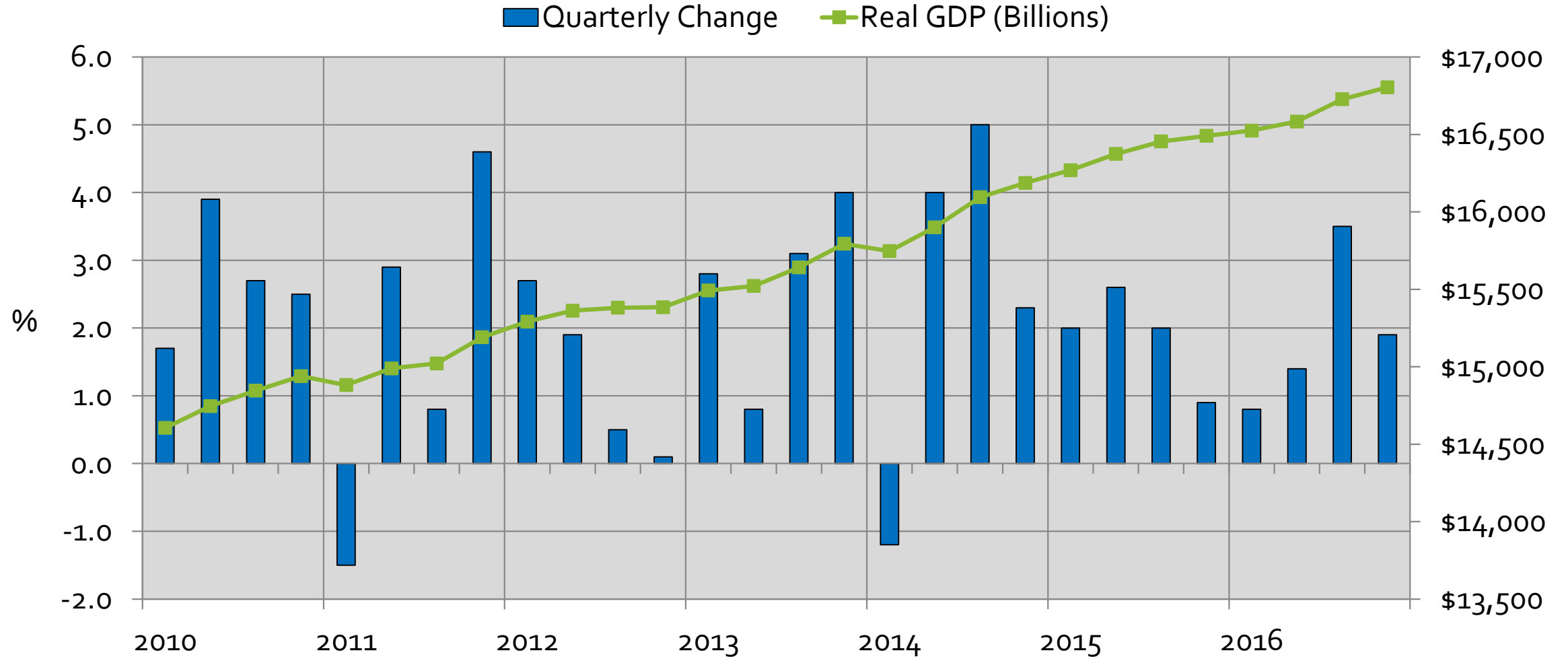
2017 National and Regional Economic Outlook

Terry L. Clower, Ph.D.

Director, Center for Regional Analysis
Schar School of Policy and Government

George Mason University

U.S. Gross Domestic Product



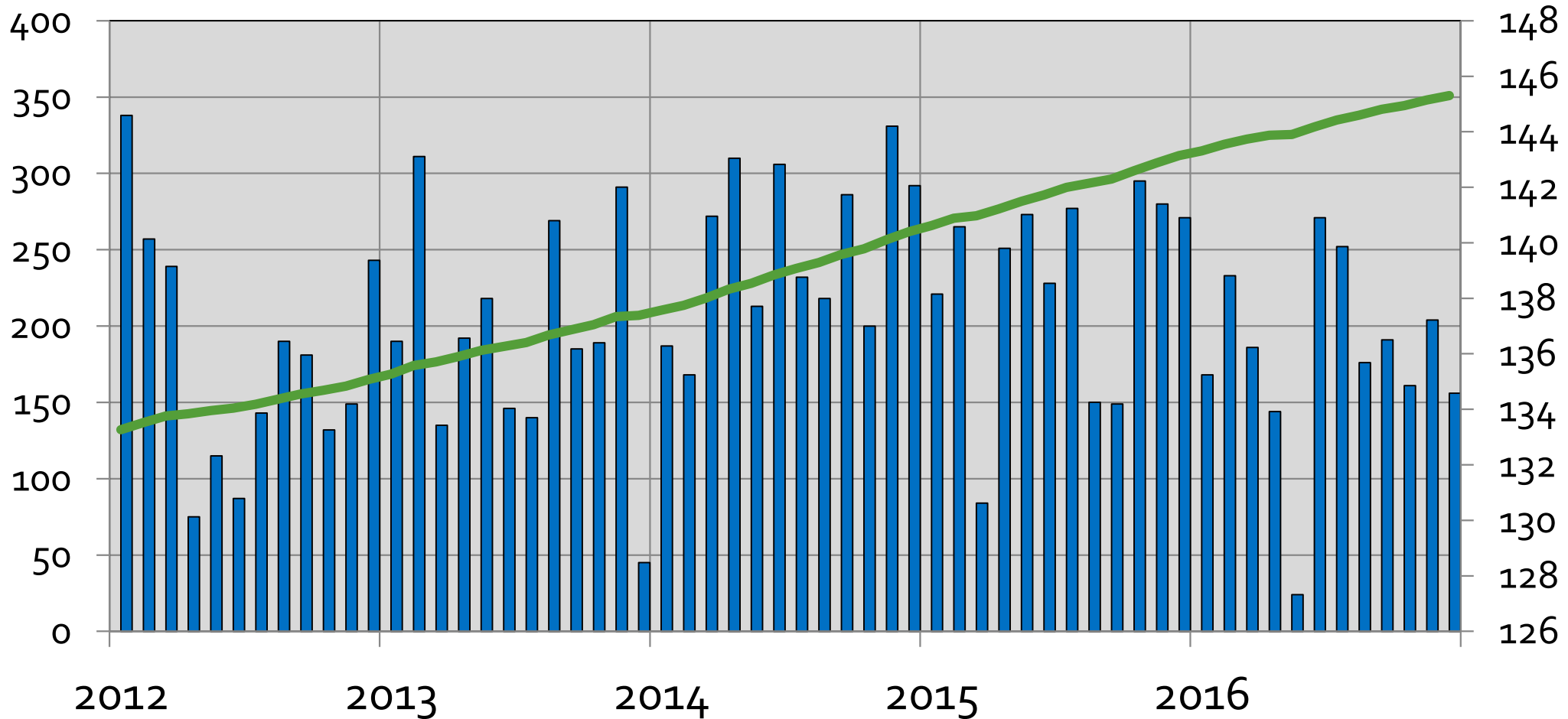
4Q16 +1.9%

Source: Bureau of Economic Analysis (Seasonally Adjusted, Chained 2009 Dollars)

US Payroll Jobs



■ Month-to-Month Change (000s) — Total (Millions)

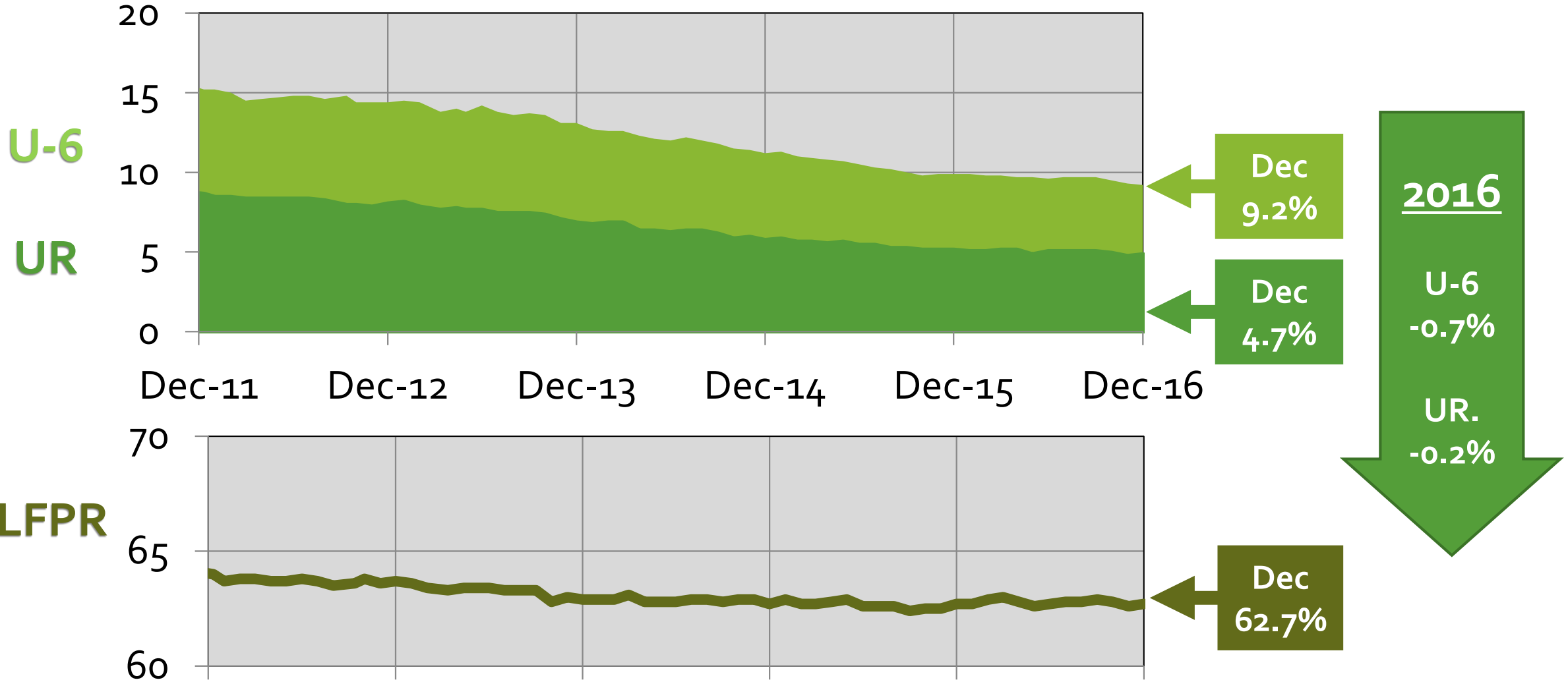


2016
+2.2
M

Dec
+156,
000

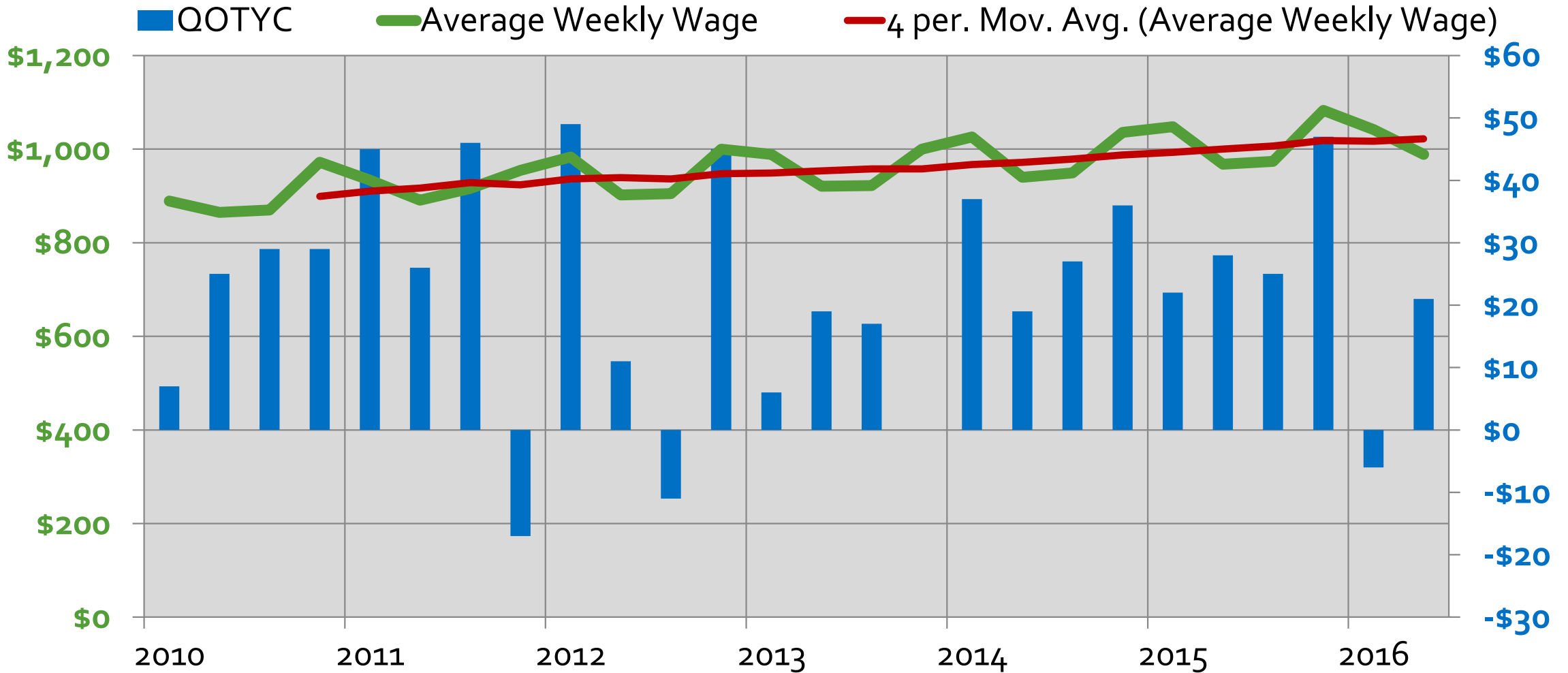
Since
2010
+14.4
M

U.S. Unemployment



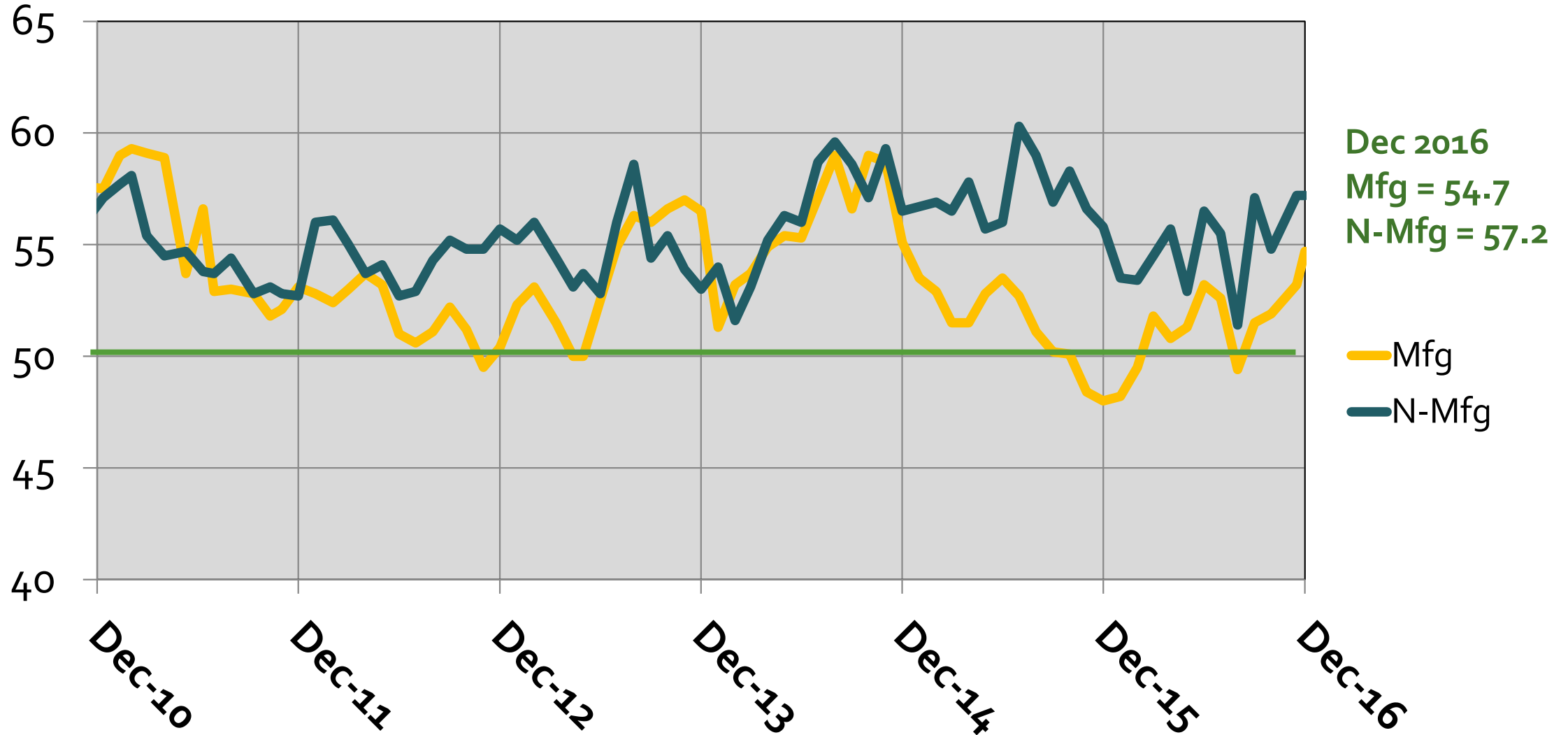
Source: Bureau of Labor Statistics (Seasonally Adjusted)

Average Weekly Wages *Across all Industries*



Source: Bureau of Labor Statistics, GMU Center for Regional Analysis

ISM Manufacturing and Non-Manufacturing Indices

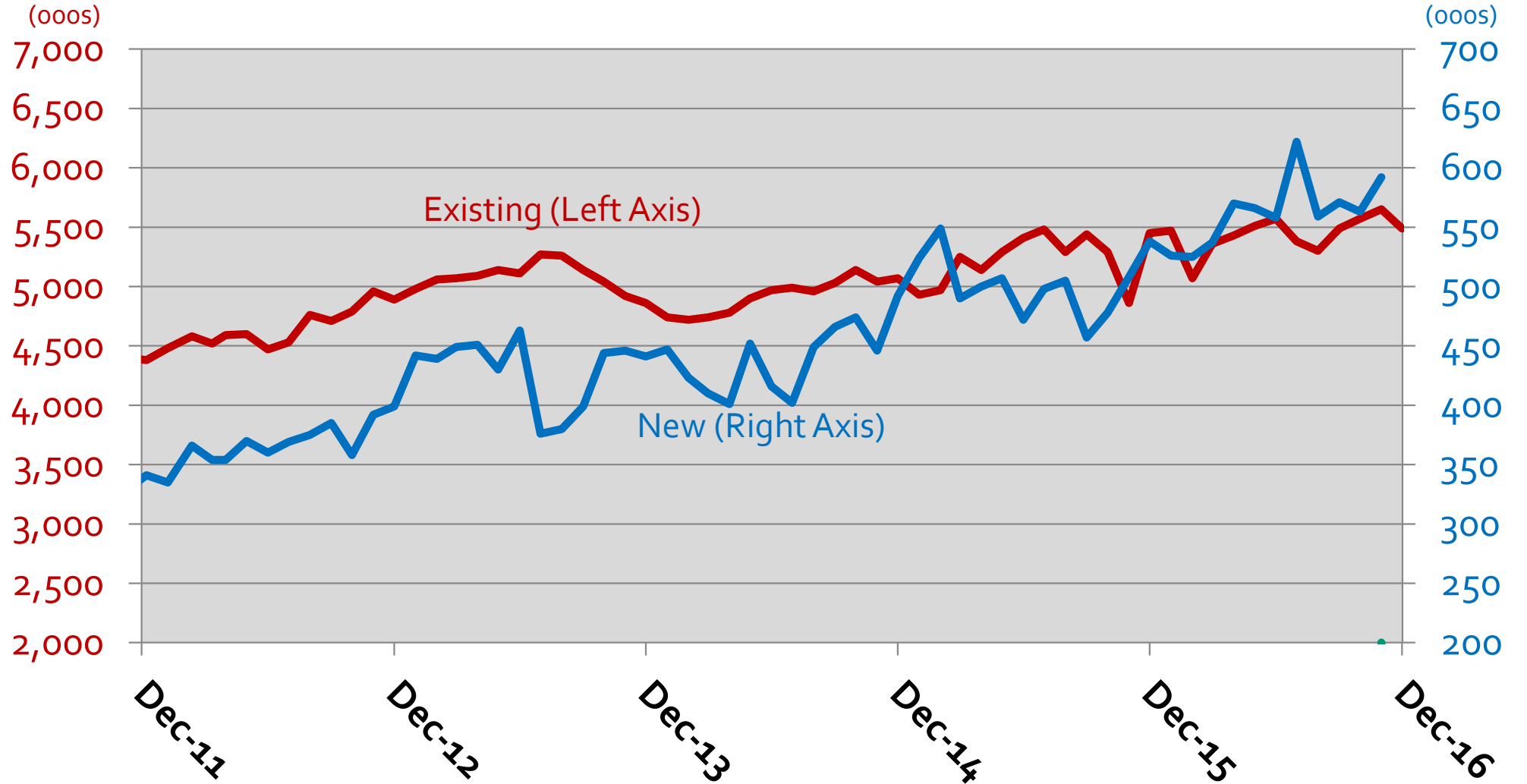


U.S. New and Existing Home Sales



2016
+0.7%
40,000

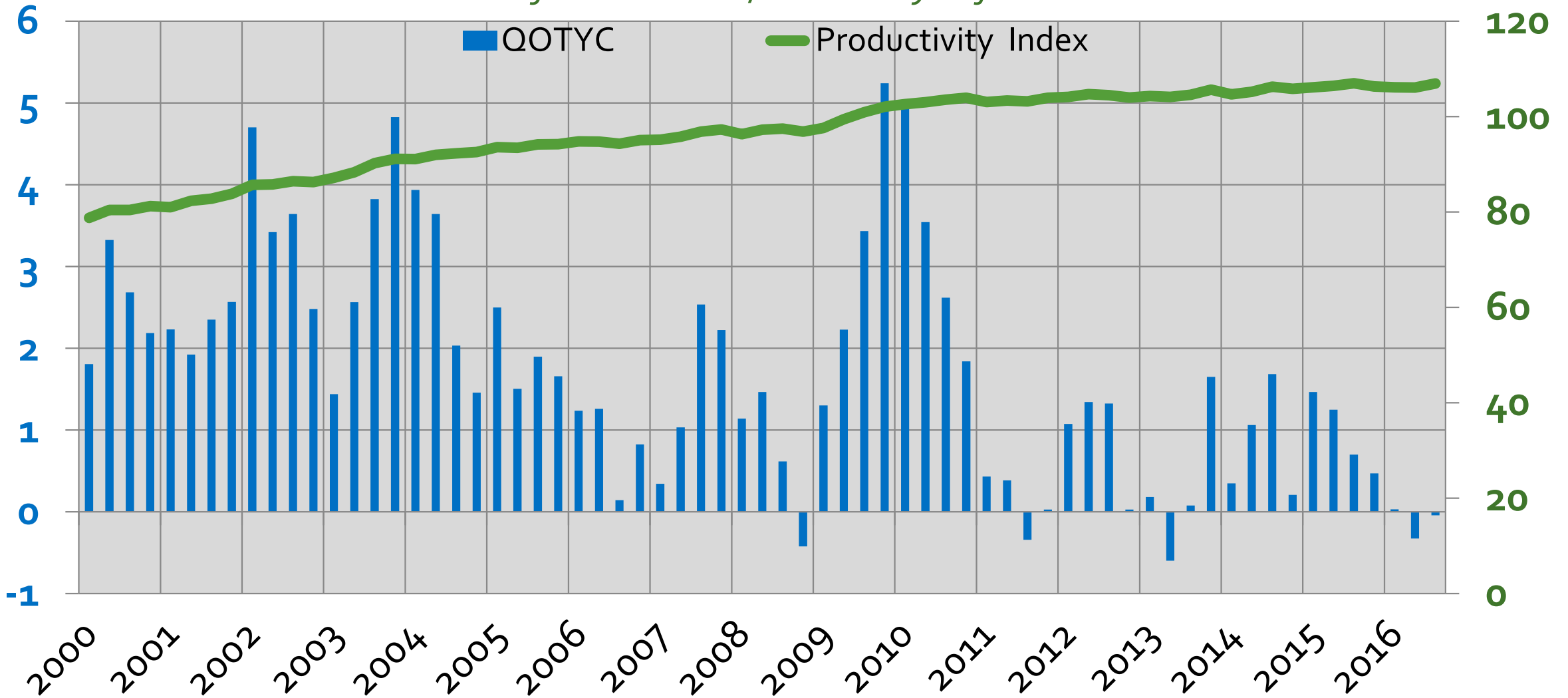
2016
+10%
54,000



Source: U.S. Census (New), National Association of Realtors (Existing)

Labor Productivity

Nonfarm business, seasonally adjusted

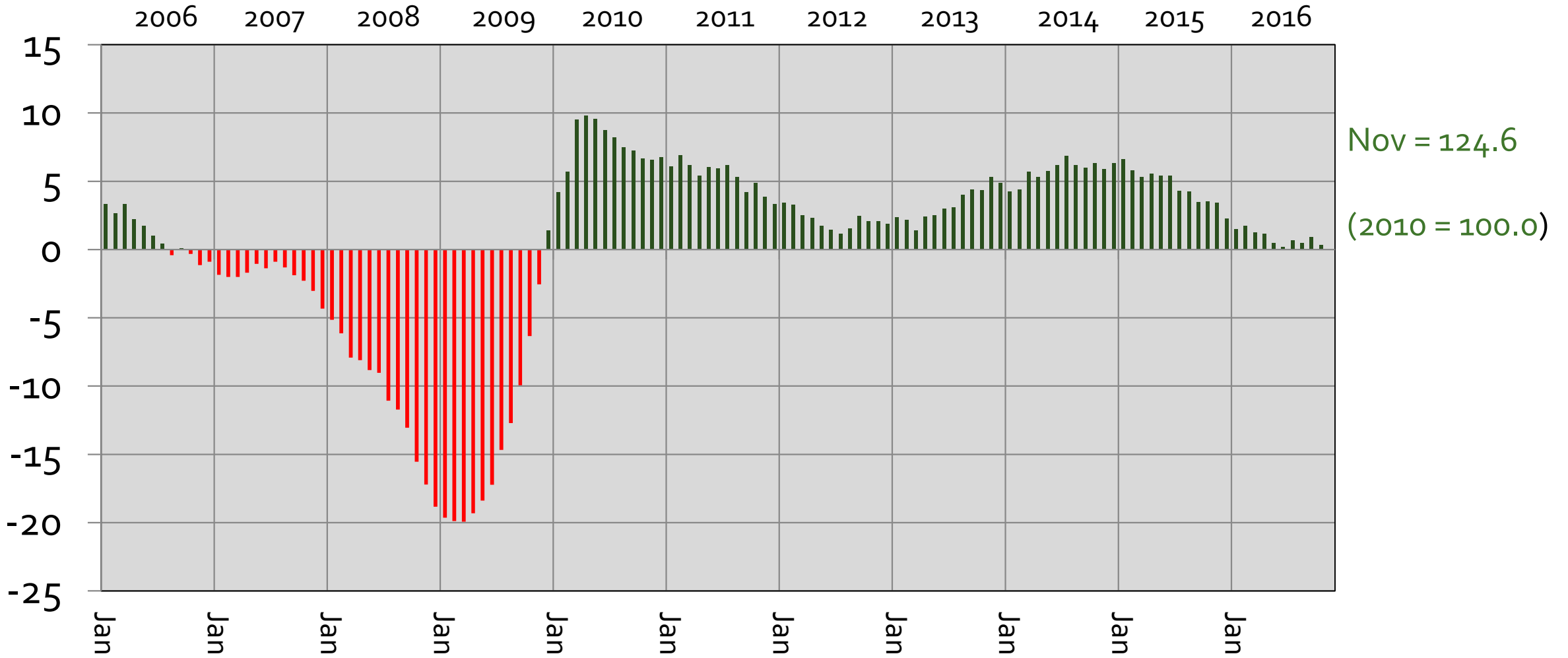


Source: U.S. Bureau of Labor Statistics

Base year (100) = 2009

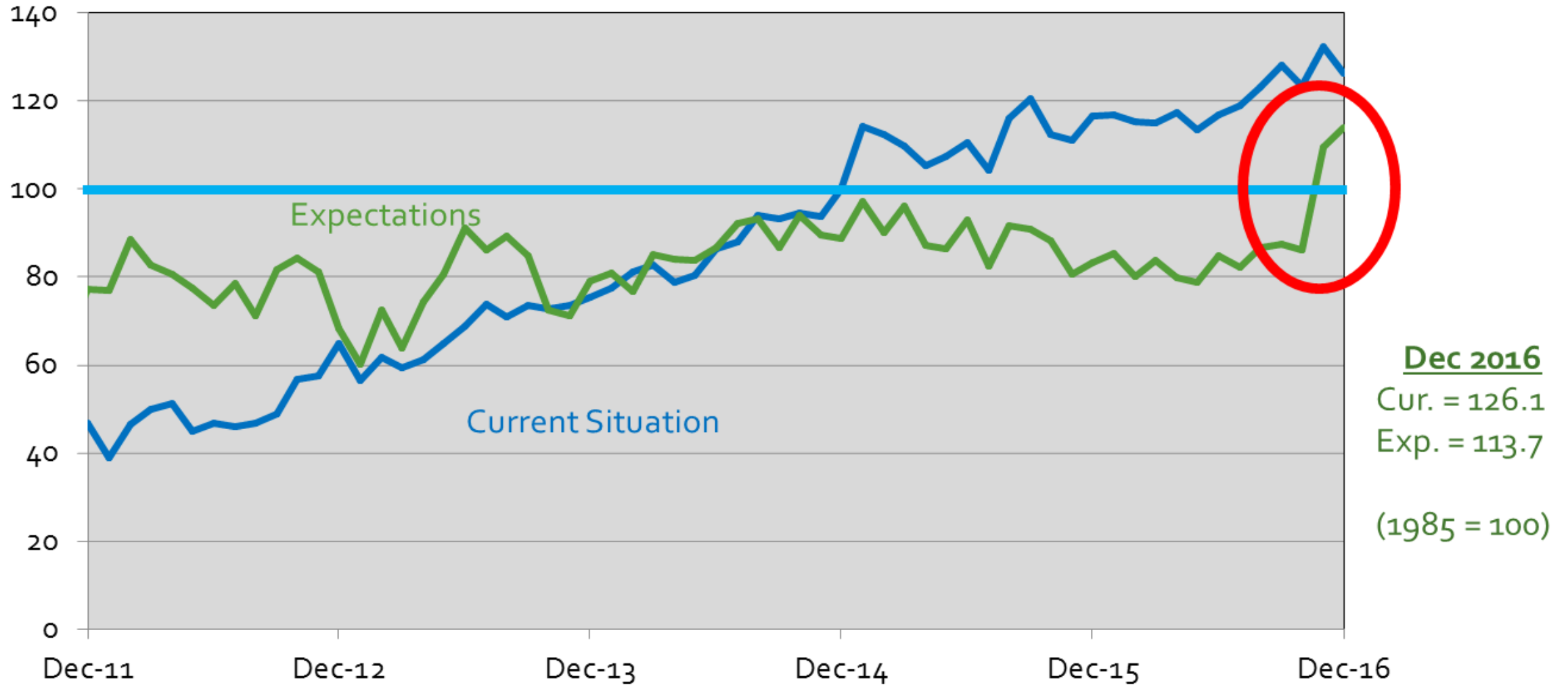
U.S. Leading Index

Month-Over-Year Percent Change



Source: The Conference Board, GMU Center for Regional Analysis

Consumer Confidence



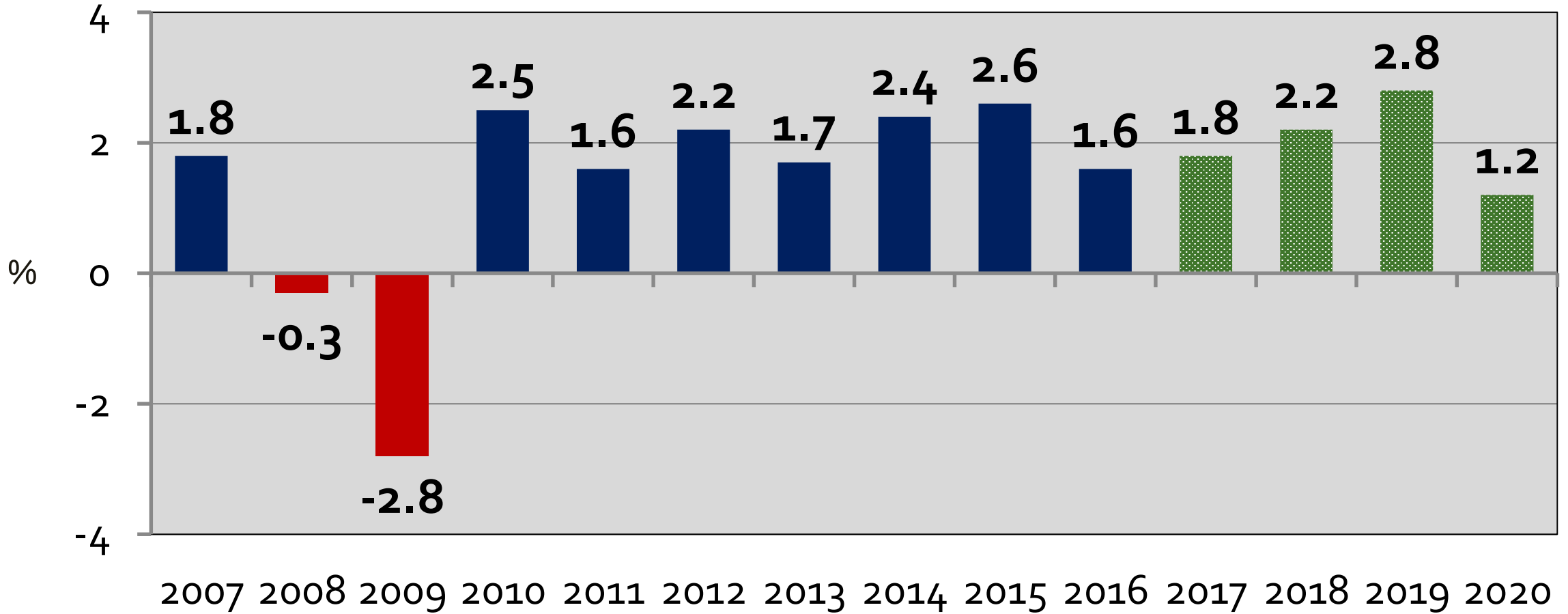
Determinants of Growth

- Corporate tax rates
 - When and how much
- Infrastructure
 - What, where, when, how
- Immigration
 - Impact on labor force availability
- Corporate investment
 - Repatriating profits does not mean spending. Global markets matter.
- Trade policy
- Inflation
 - When does the spending become inflationary?
- Spending vs. Revenue vs. Debt
- Interest rates
 - Fed action and market reaction
- Productivity
 - Will we prioritize productivity enhancing programs & spending
- Adaptability
 - Technology change is a given

U.S. GDP

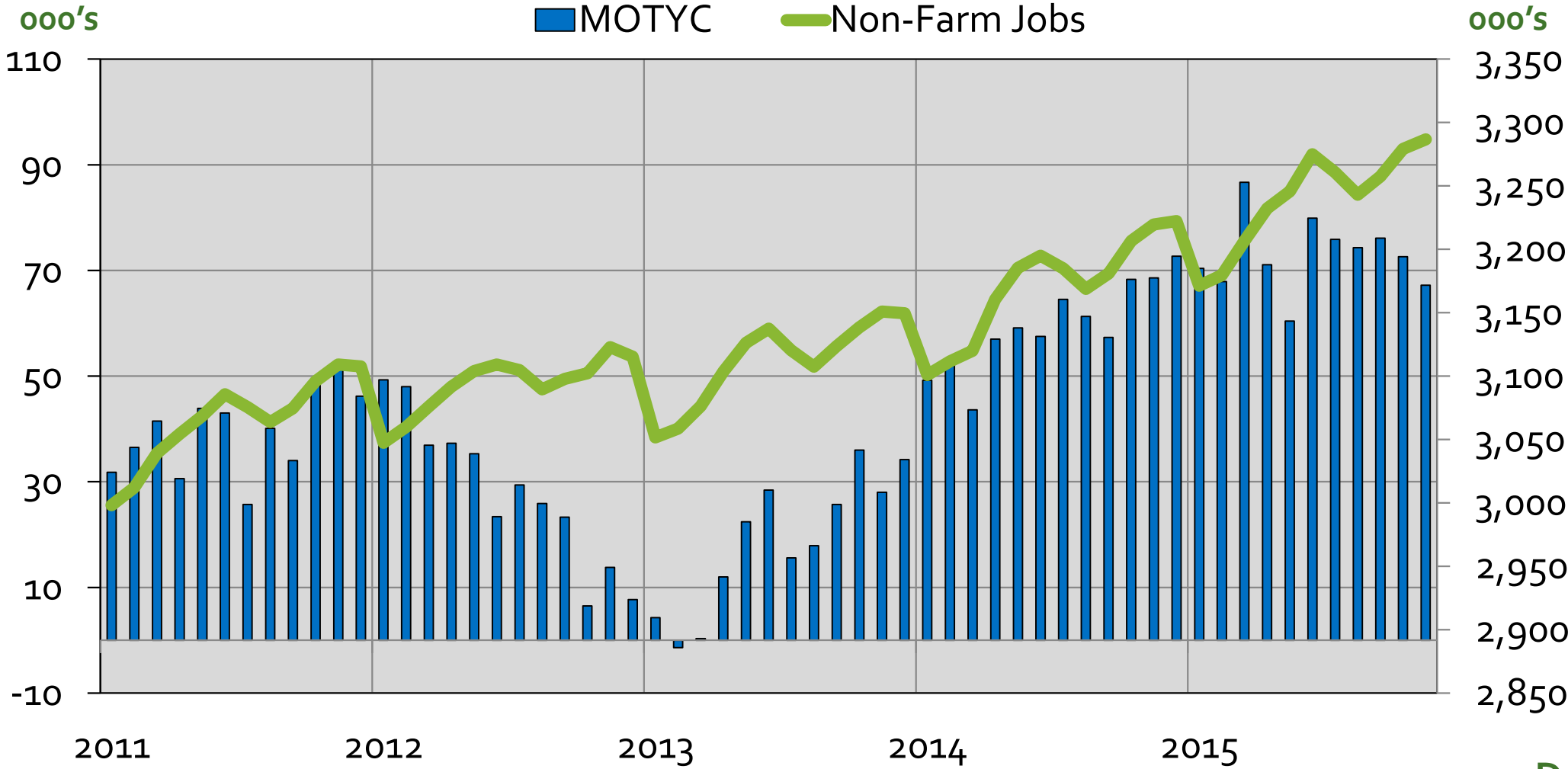
2007 – 2016 – 2020

(Annual % Change)



The Washington Economy

Annual Job Change - Washington MSA

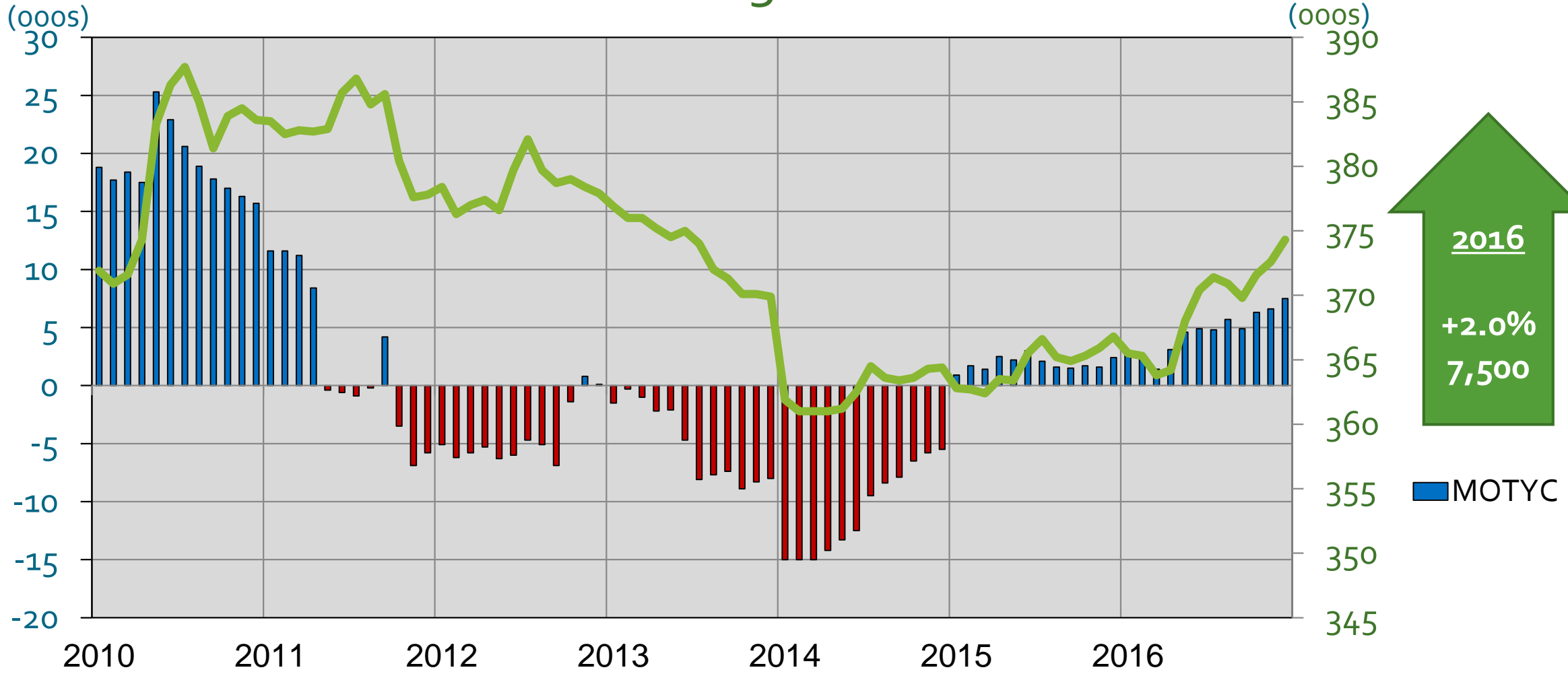


2016
+66.6 K

Dec-16
Total: 3,288 K

Source: Bureau of Labor Statistics (Not Seasonally Adjusted), GMU Center for Regional Analysis

Federal Government Washington MSA



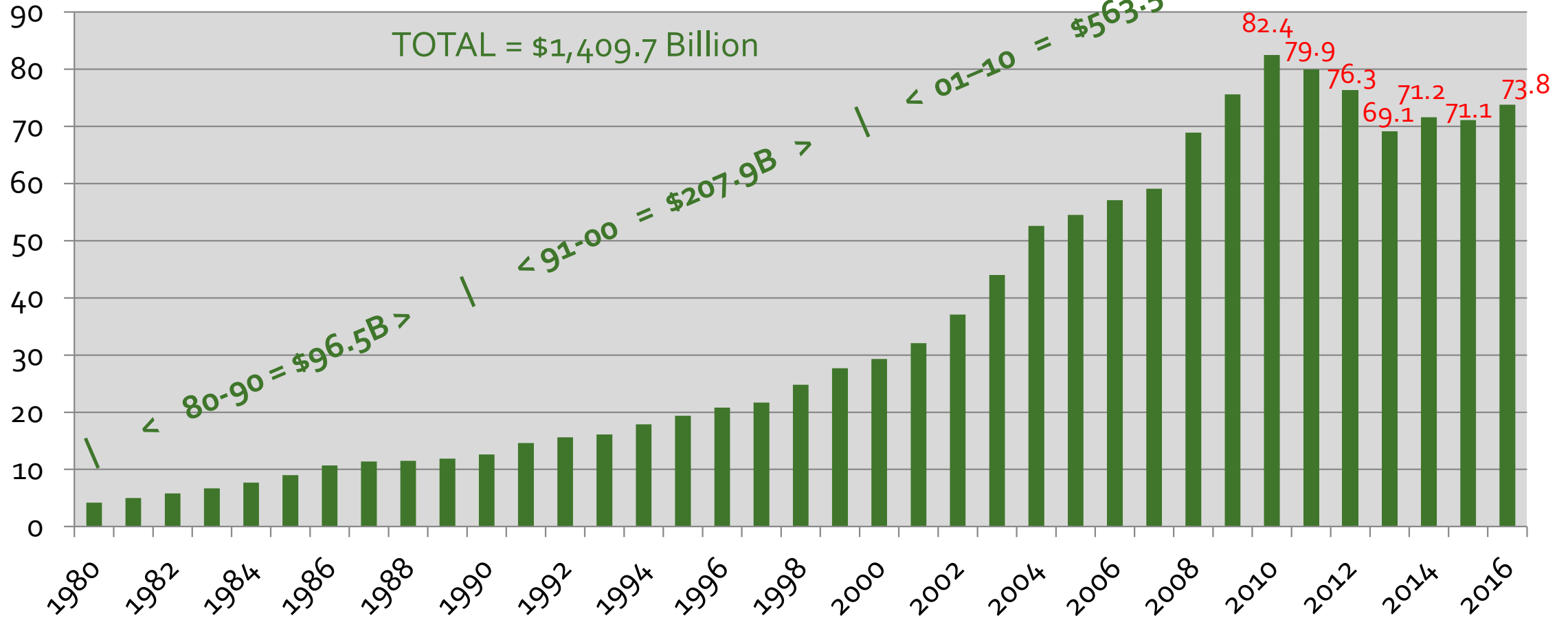
Source: Bureau of Labor Statistics (Not Seasonally Adjusted), GMU Center for Regional Analysis

Dec-16 Total: 374.3

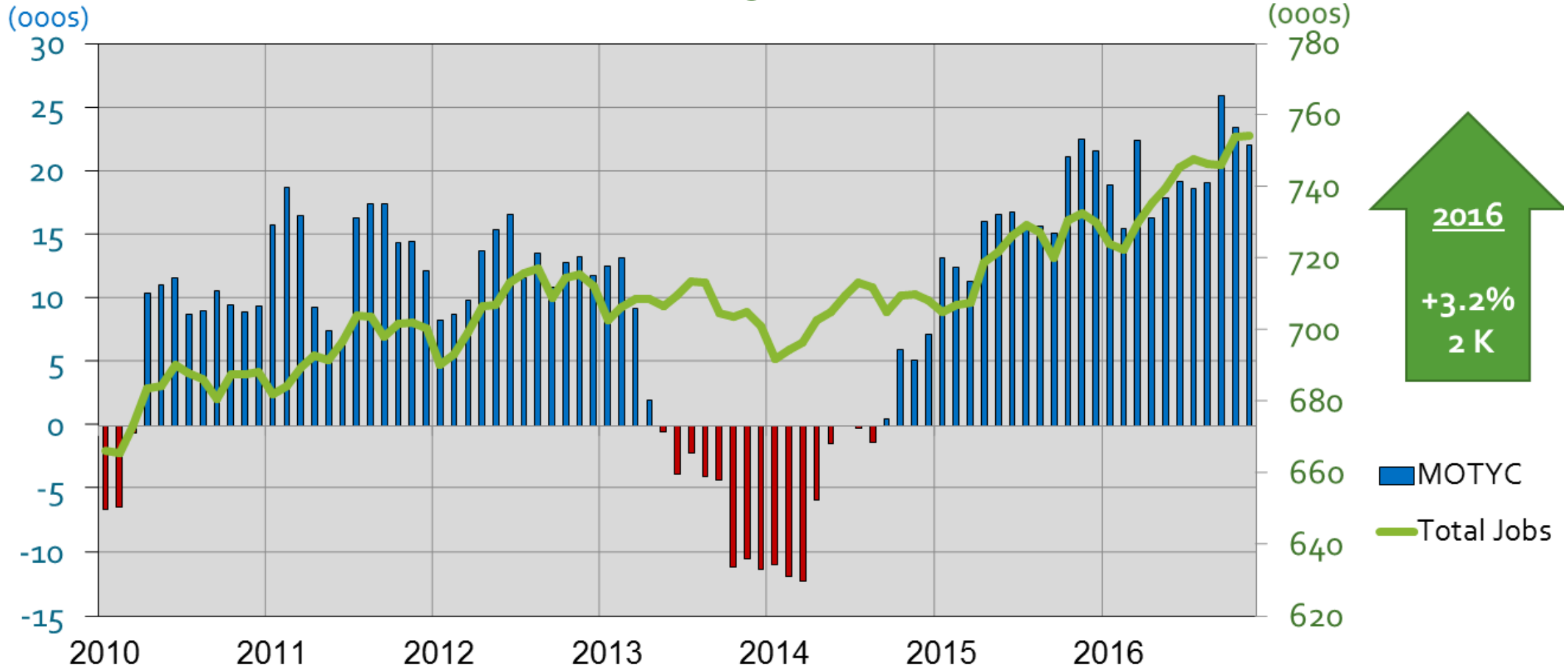
Federal Procurement in the Washington MSA 1980-2016 (Fiscal Years)



\$ Billions



Professional & Business Services Washington MSA



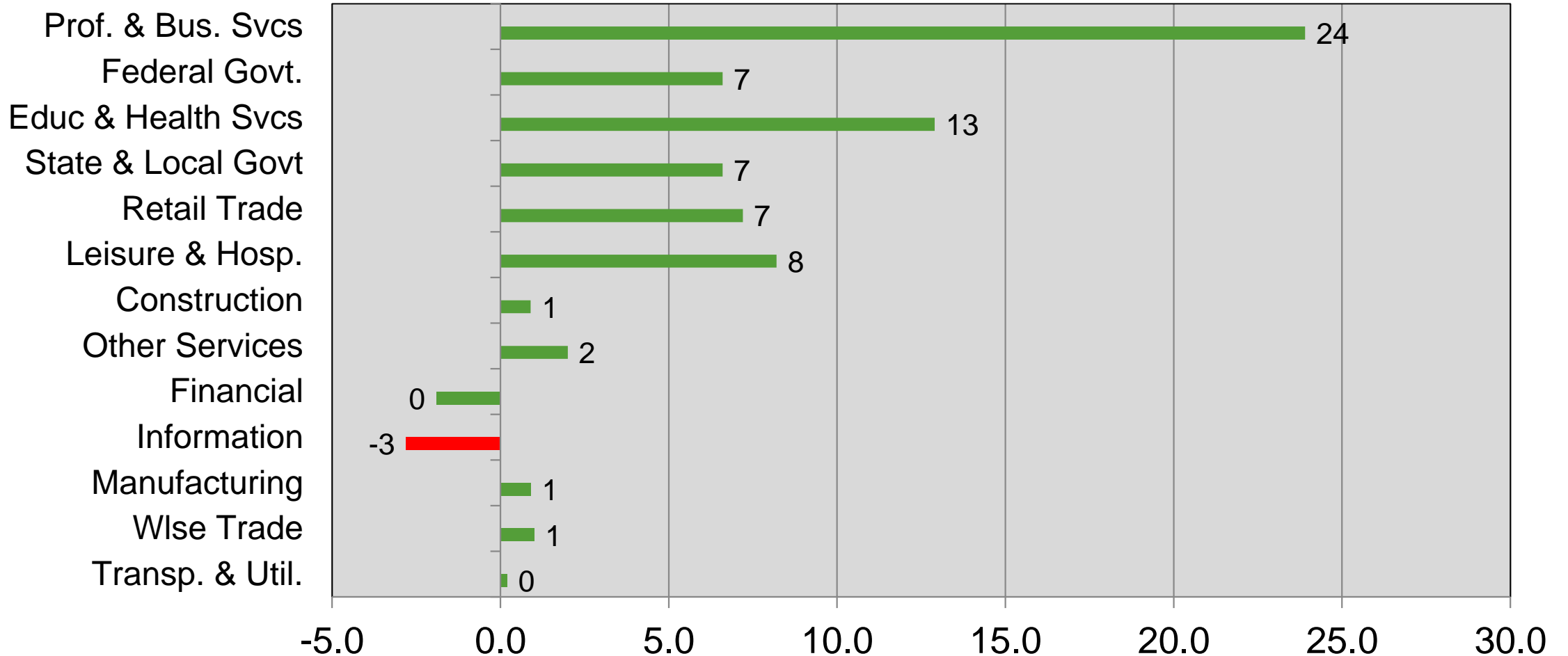
Source: Bureau of Labor Statistics (Not Seasonally Adjusted), GMU Center for Regional Analysis

Dec-16 Total: 753.8K

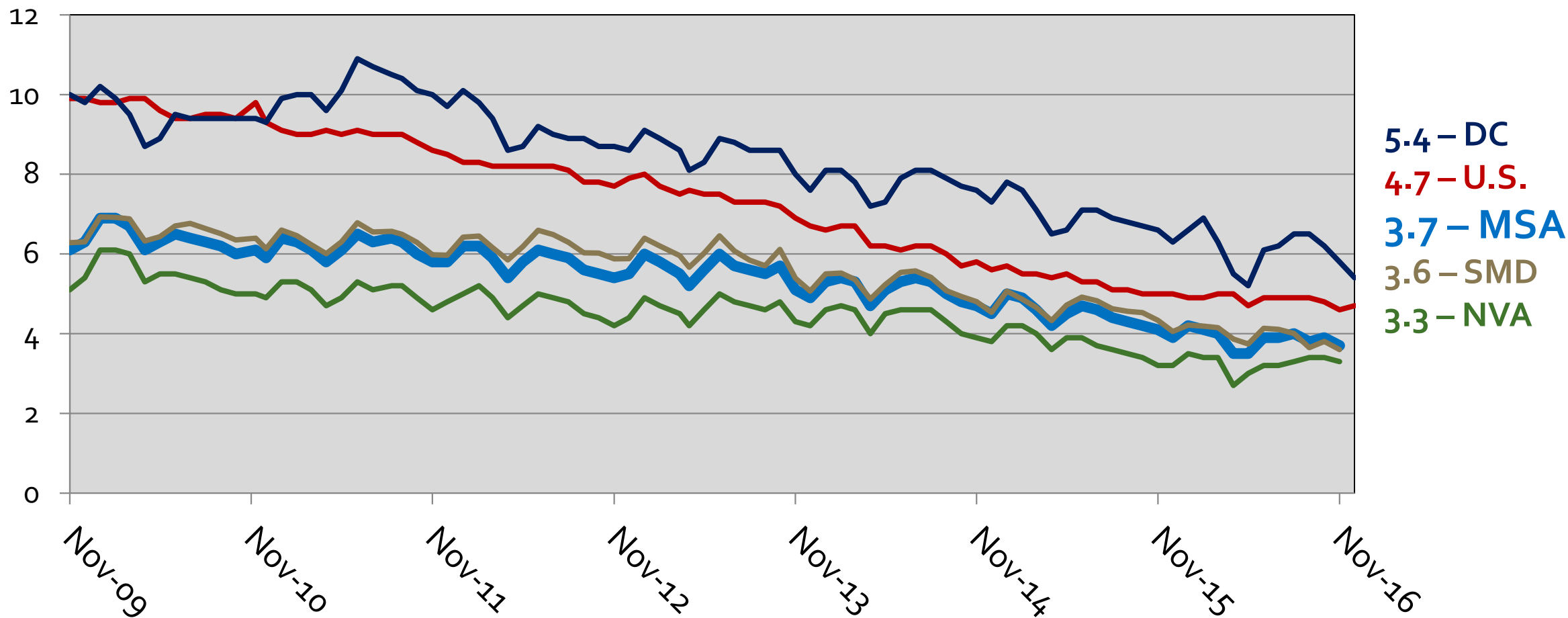
Job Change by Sector Dec 2015 – Dec 2016 Washington MSA (000s)



Total = 66,600

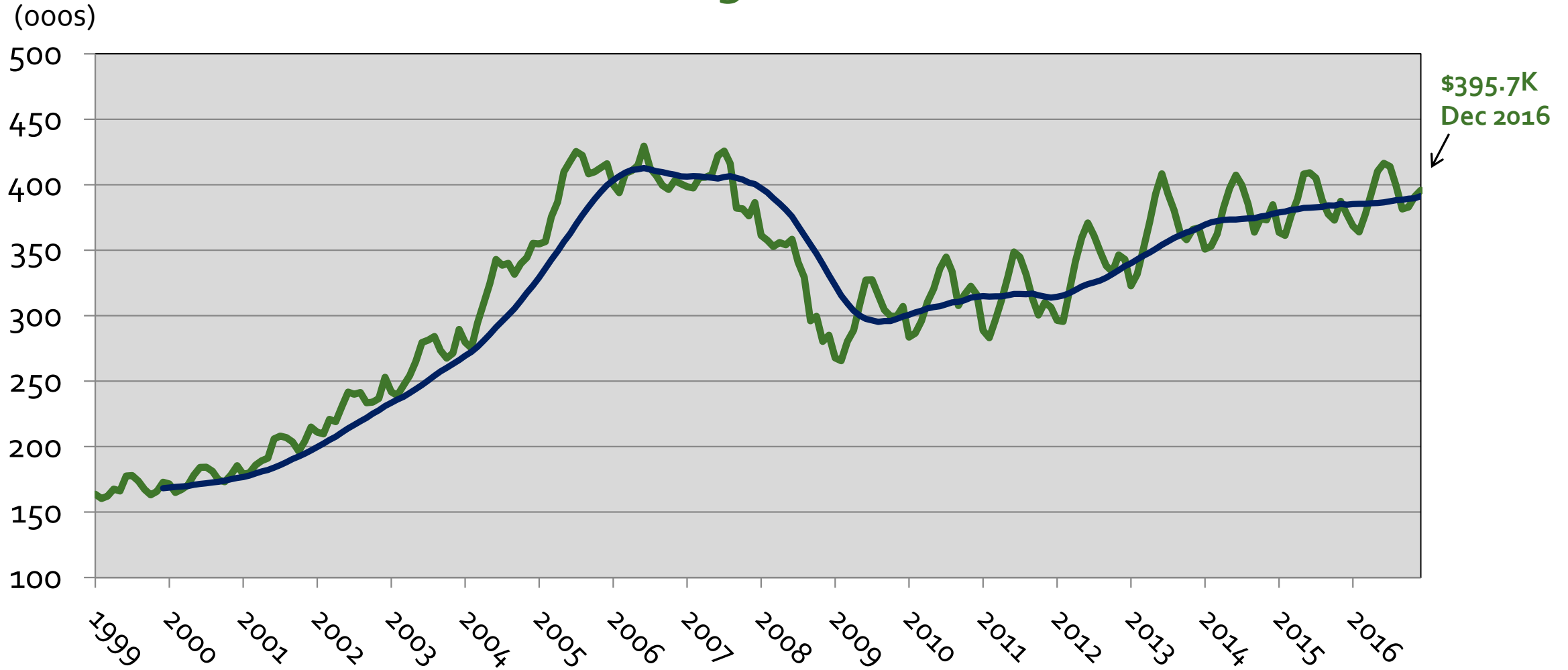


Unemployment Rates in the WMSA By Sub-State Area, 2009-2016



Source: Bureau of Labor Statistics (Region - Not Seasonally Adjusted, US – Seasonally Adjusted)

Median House Sales Price Washington MSA

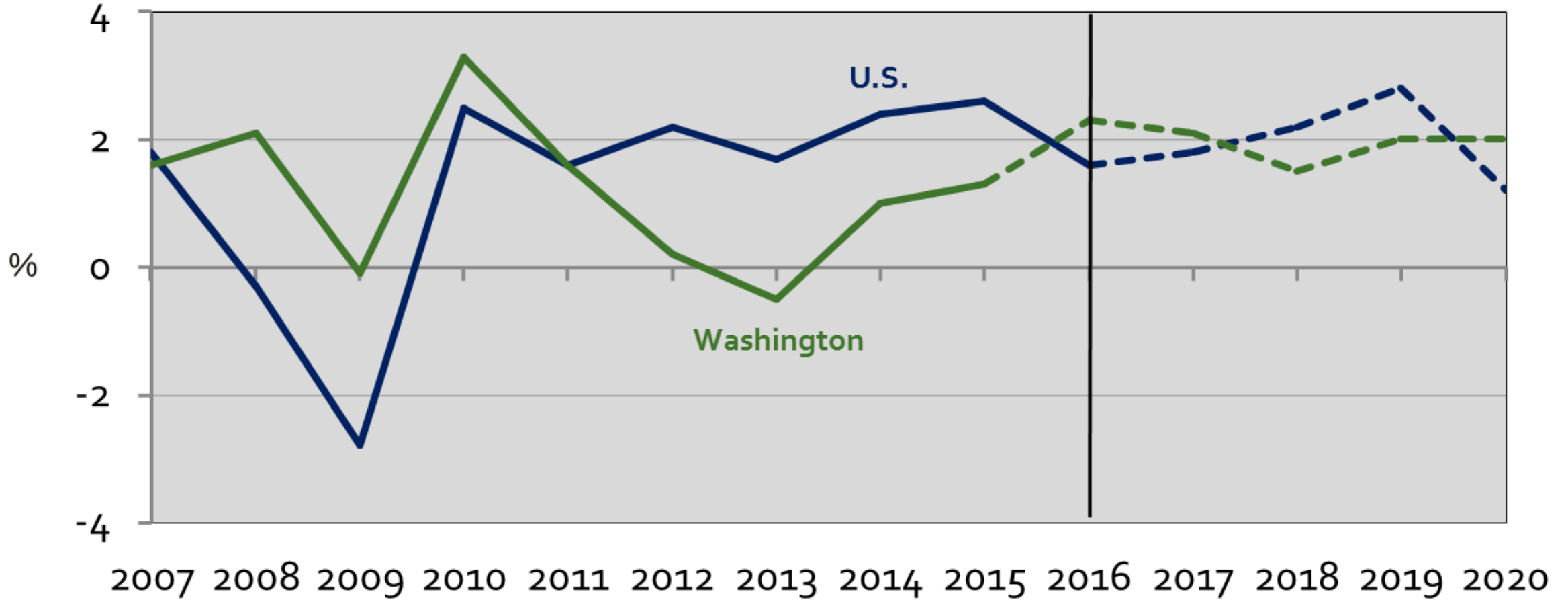


Source: Metropolitan Regional Information Systems (MRIS), GMU Center for Regional Analysis

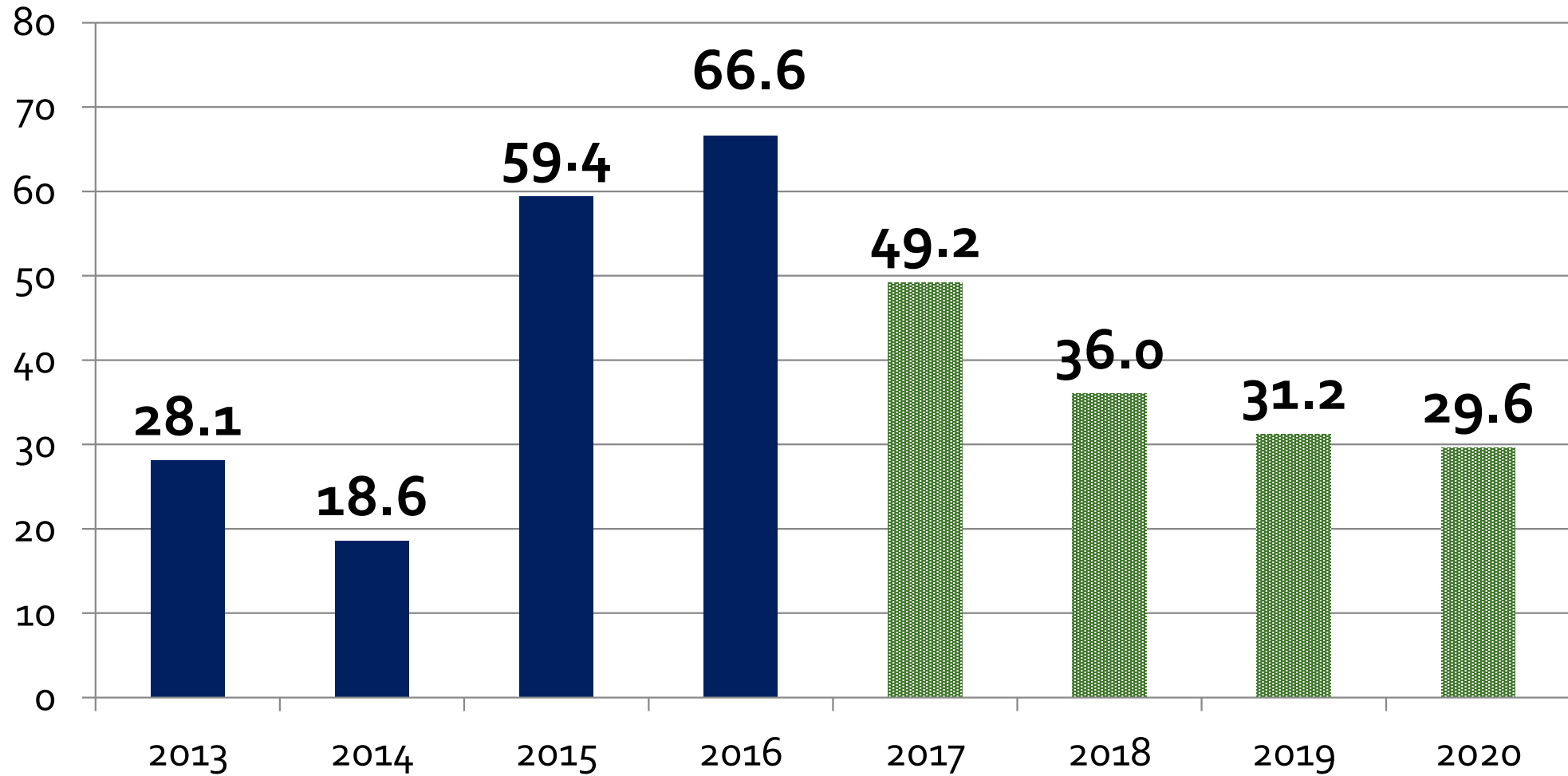
U.S. GDP and Washington Area GRP



2007 – 2016 – 2020
(Annual % Change)



Employment Change in the Washington MSA (Thousands of Jobs)



Source: BLS, GMU Center for Regional Analysis (January 2016)

NOTE: The regional totals do not include Jefferson, WV.

Average Annual Change 1990-2012 = 36,500

Where are we?

- We are growing:

- Some diversification
- Some catch-up
- Recent job growth across all wage levels
- Growth will continue in 2017, but at a moderating pace

- Advantages

- Government Center
- International Institutions
- Connectivity to the World
- Concentration of Leaders
- Access to capital
- High Quality-of-Life
- Diverse Population
- Higher Education
- Educated Work Force
- Advanced Occupational Specializations

- Challenges

- Drain the swamp/Sequester
- Further market shifts needed
- Cost of living/doing business
- Mobility
- Access to capital
- Regional branding / cooperation
- Globally competitive?
- Understanding changing nature of jobs
- Productivity

Thank You
Questions

tclower@gmu.edu

cra.gmu.edu